

# **Barrier Free Environment at BRICK SCHOOL OF ARCHITECTURE**

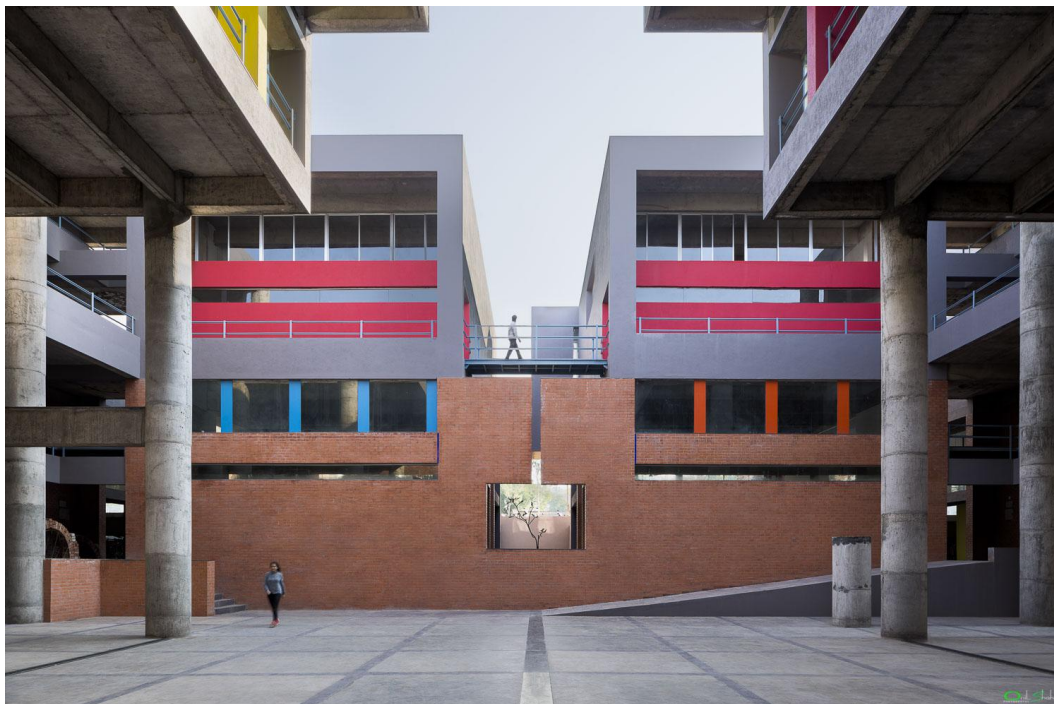
|  |    |
|--|----|
| Addressing various types of disabilities in the campus ..... | 3  |
| All the Studios and classrooms are connected.....            | 3  |
| The studios.....   | 7  |
| The workshops.....   | 9  |
| Laboratories.....  | 10 |
| Library and computer lab.....                                | 12 |

## **Addressing various types of disabilities in the campus**

Architecture is a profession where sensitization is most important. Design of any space is responsible for its overall experience. The visual, auditory, thermal, and aromatic experience of any space is an outcome of its spatial planning and design. For this matter the basic tools for expression are drawings, models, reports, music and videos. As these are the essential modes of working in architectural education and practice, there are some restrictions for addressing all the types of disabilities. In the present educational system and with available technology, the architectural aspirants must have vision, listening ability and efficient hands to work on drawings, crafts and model making. However person with physical disability can be a part of this education in the campus of S.M.E.F's Brick School of Architecture. The campus of Brick School of architecture is designed for wheel chair accessibility. All the classrooms are connected with each other and are accessible by ramp. A person with wheelchair can approach all the classrooms, washrooms, computer lab, library and workshops without assistance. The open interactive areas in front of the classroom and also in outdoors are easily approachable by the wheelchair.

## **All the Studios and classrooms are connected**

The central open space connects to all the areas, and is most vibrant area in the campus. Students remain here when the classes are not there. This area is also accessible by wheelchair. Following images show the multiple activities happening in this court.



## **Multiple uses of Muktangang of Brick School of Architecture**



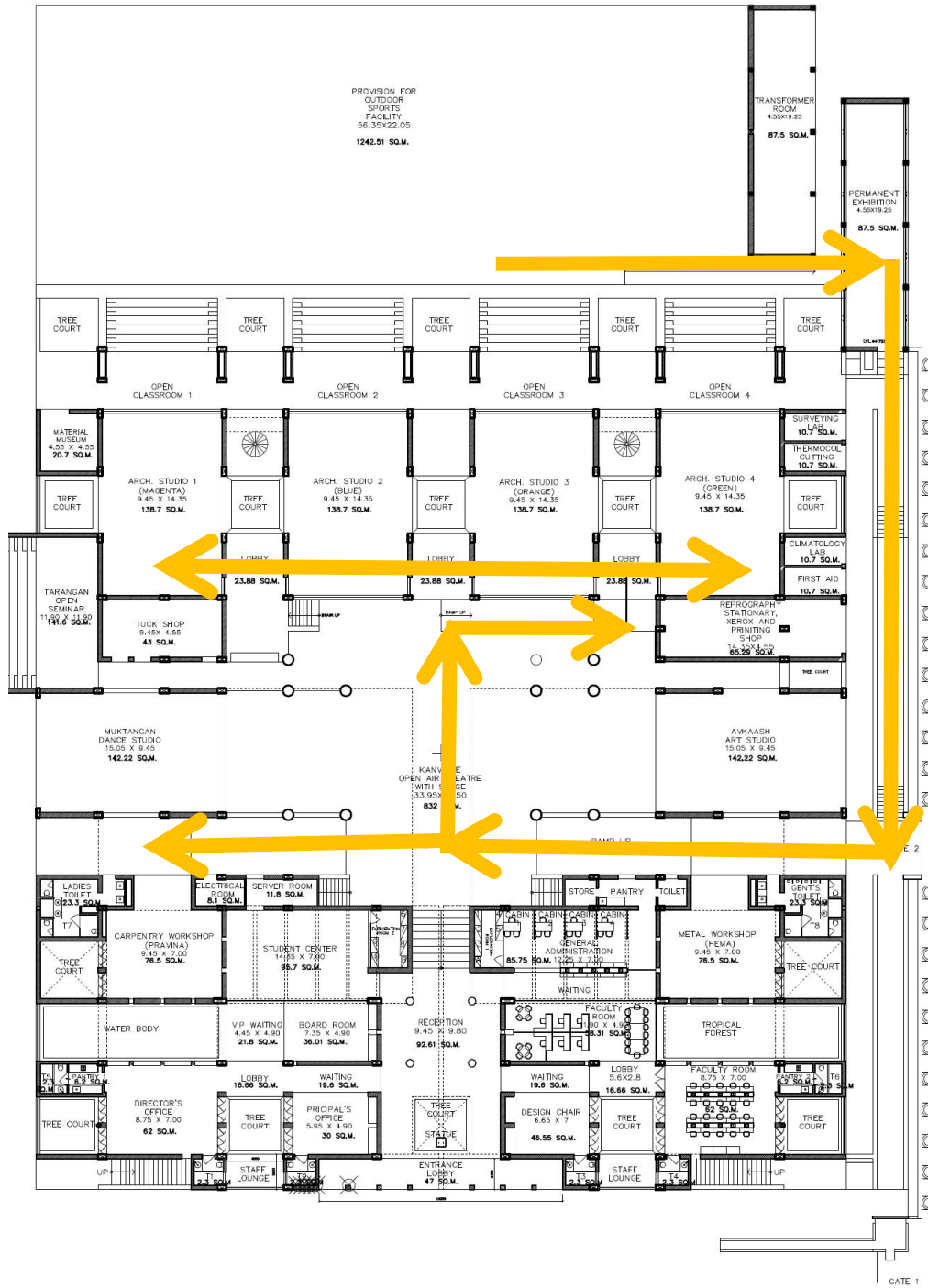
*CELEBRATION OF  
INTERNATIONAL YOGA DAY*

**Multiple uses of Mukhtangan of Brick School of Architecture**





**Multiple uses of Mukhtangan of Brick School of Architecture- all the spaces are accessible by wheelchair**



**GROUND FLOOR PLAN**  
 SCALE 1:250

**DRAWING 2**

of Architecture, Pune

manuk architects

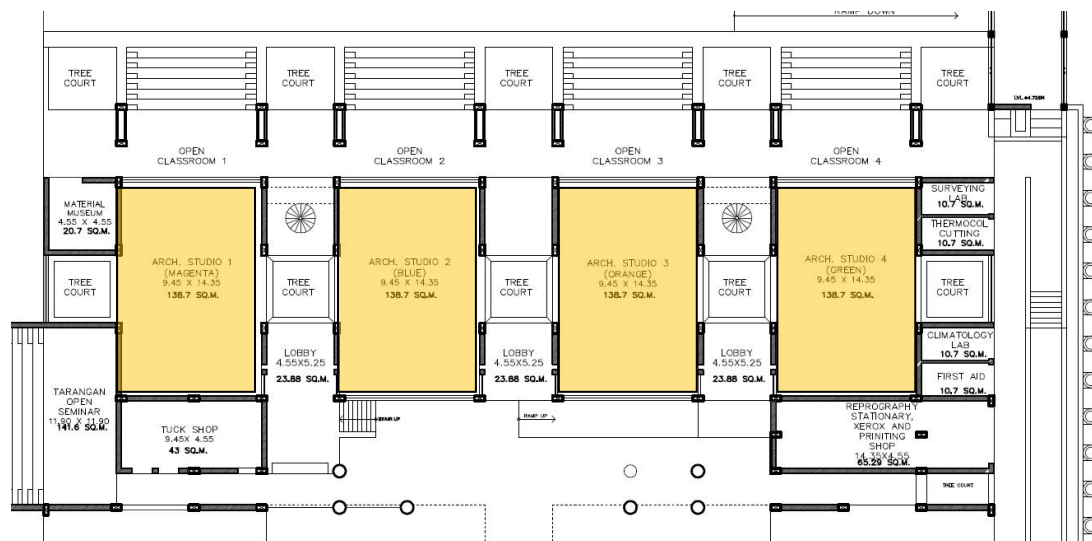
"manikanchan" shirore road pune - 411004

Ground floor Plan with wheelchair movement

## The studios

The studios have uniform layout and flexibility in design to suit to the requirements of the progressive classes. The spaces get enough day light and ventilation. Also the spaces near studios are used actively for the classes.

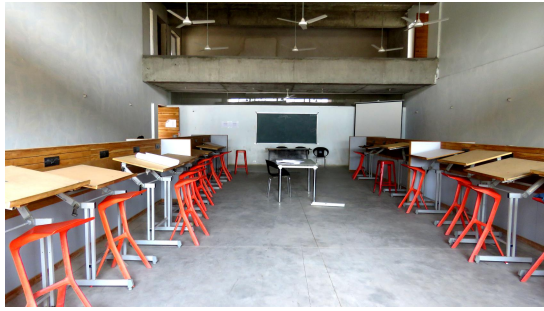
There are courtyards between every two studios that can be approached by sliding folding doors. Opening these doors converts the spaces in a large area as presented in Figure 2, that can be used a single space at the time of inter class activities or workshops. All the areas in the studios are accessible by wheelchair.



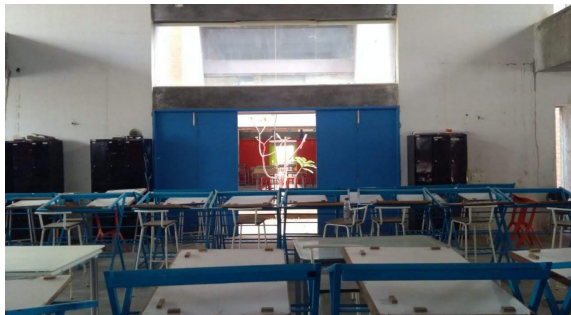
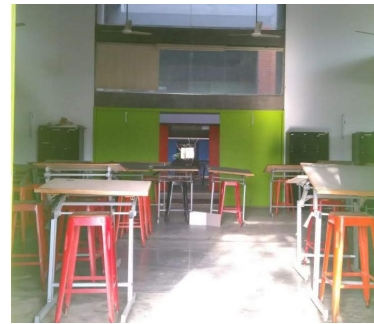
Layout of studios approachable with wheelchair



Studios for first and second year



**Arrangement of laptop charging points in third and fourth year studios**



**Arrangement of openings in the studios to convert them in a large continuous space. All these areas are interconnected with each other, and are accessible by wheelchair too.**

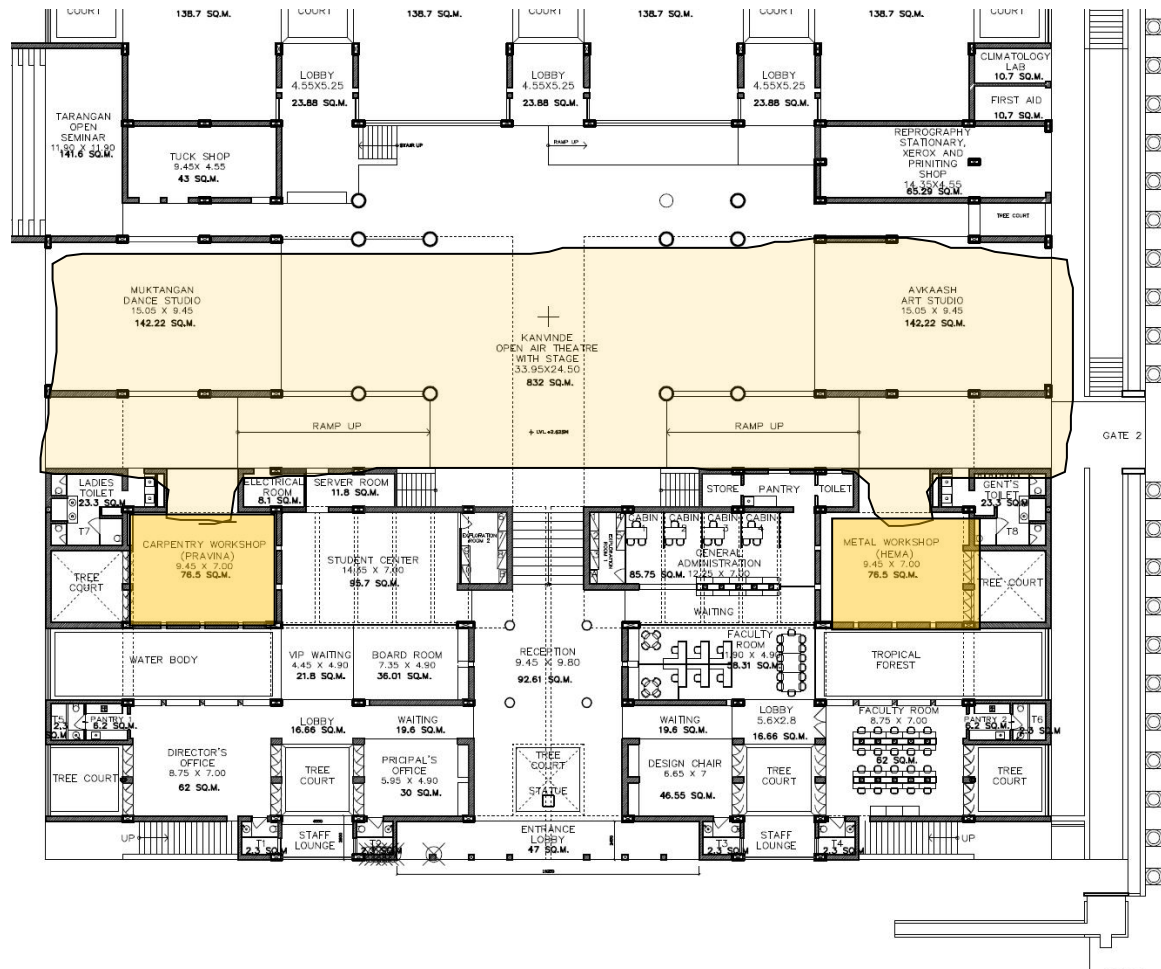


**Outdoor classrooms are at level of Mukhtangan and its lower level can be approached by wheelchair**



## The workshops

There are two workshops in the campus that are used for multiple purposes, like arts and crafts, dance, rehearsals for events, and cultural activities. The central open space connects to the workshops through ramps on the opposite sides and are approachable by wheelchair. Following drawing presents the locations of workshop and pictures of the activities happening in the workshops and the areas near workshops.



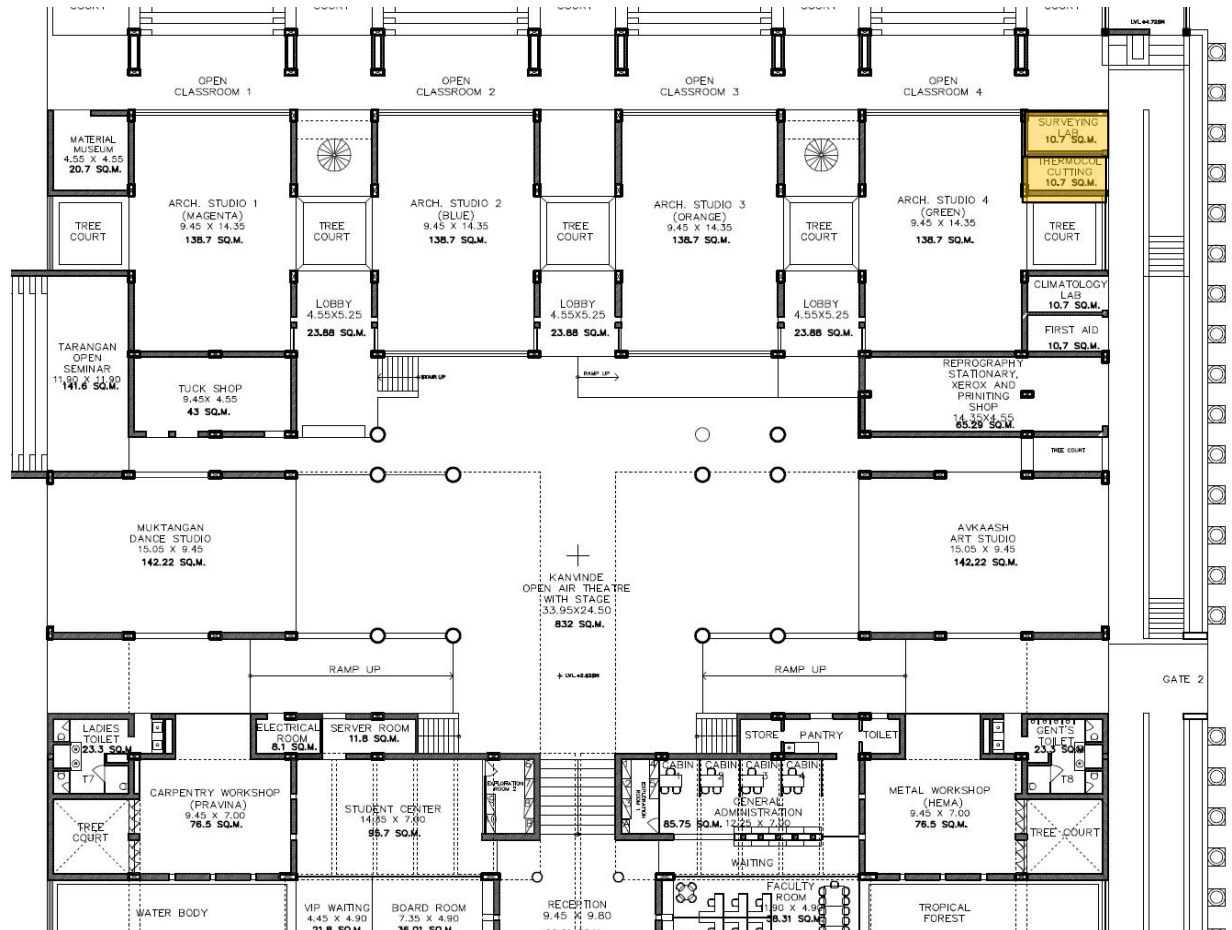
**Workshops and activities happening in the workshop spaces and the semi-open and open areas near them**

## Laboratories

The laboratories are accessible by wheelchair.

### Surveying and Leveling Lab

Following drawing represents the location of surveying lab and pictures of the same.

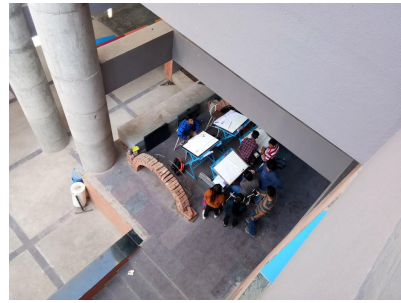
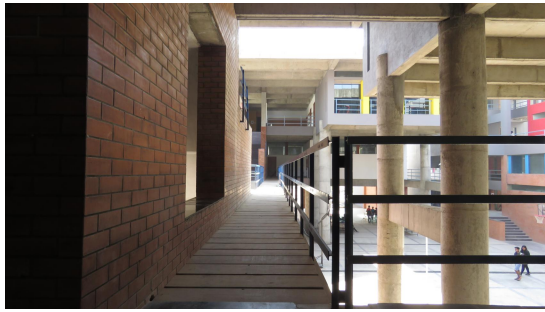


### Places for informal interaction

The pedagogy at brick is also about connecting with the students and bringing the best out of them. The outdoor and open areas facilitate very good interaction between the students and also between students and faculty. At times the classes also happen through interaction in these areas. The upper level of these areas can be approached by wheelchair and the person sitting at upper level can easily interact with the people in the lower level of this area.

Following pictures represent the glimpses of these outdoor areas.



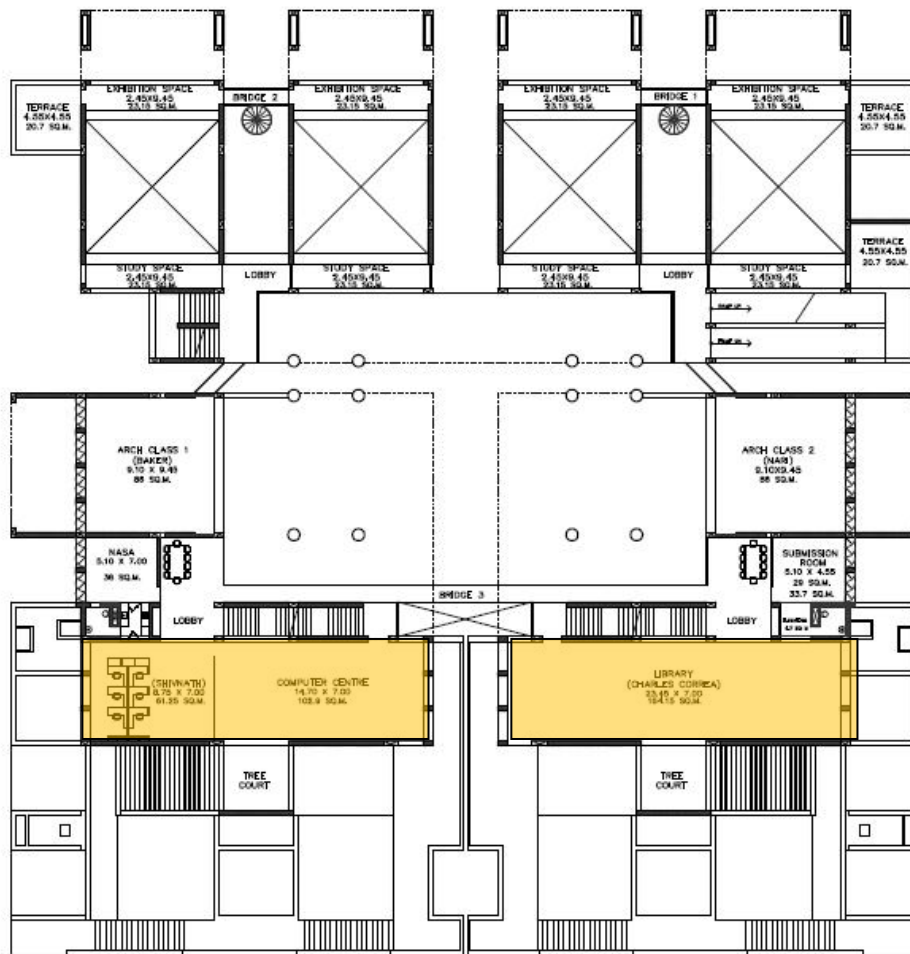


**Areas of informal interaction**



**Boys Common rooms**

### Library and computer lab

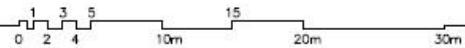


STREET FLOOR PLAN



NORTH

1ek School of Architecture, Pune



# DRAWING 4

navkar architects

"manikanchan" shirole road pune - 411004

Location of library and computer lab in the campus- approachable by ramp and the adjacent classroom to it